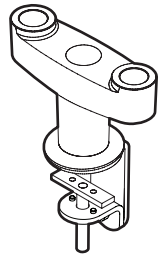
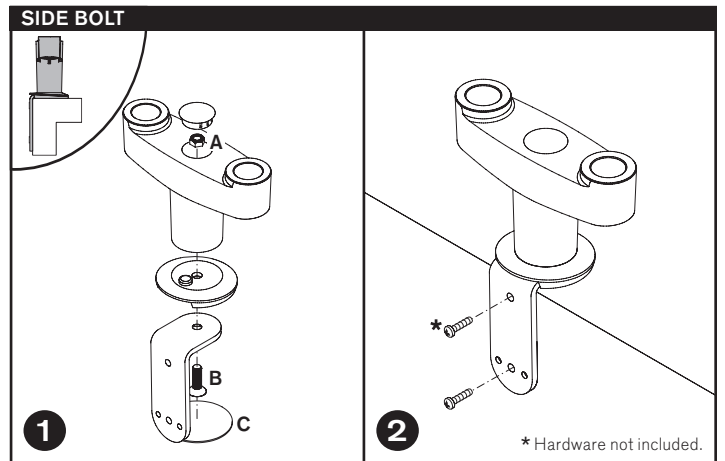
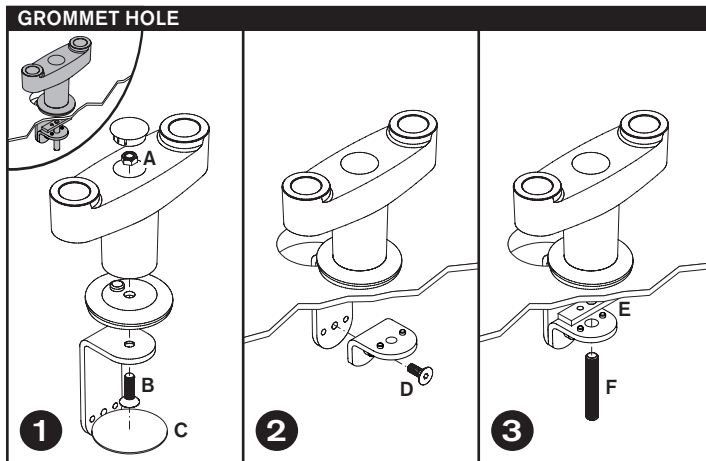
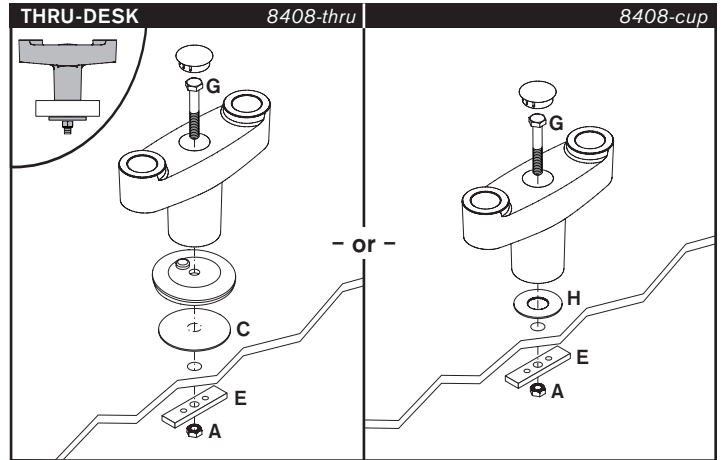
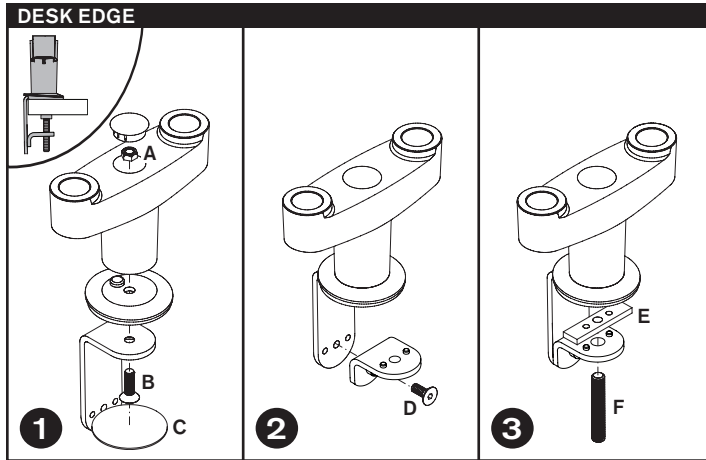


MODEL 8408

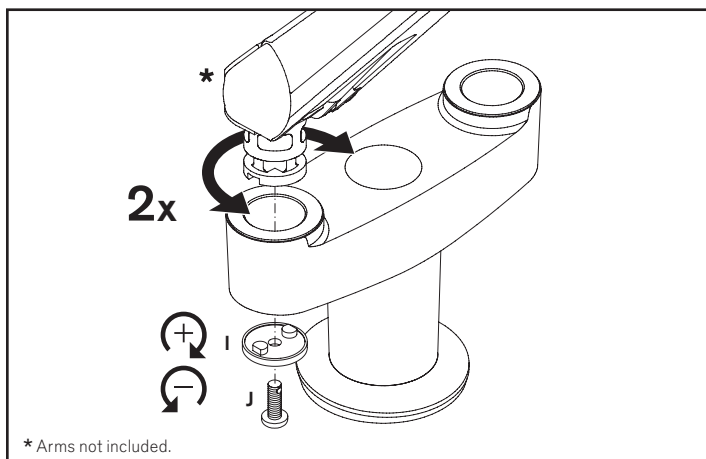
Installation Instructions



STEP 1 CHOOSE MOUNT CONFIGURATION



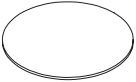
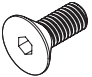
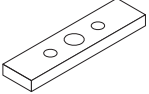
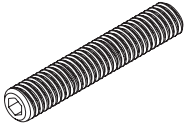


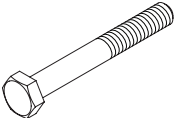

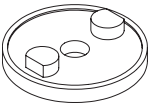
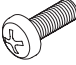
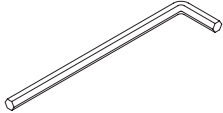
STEP 2 ADJUST ARM ROTATION FRICTION



MODEL 8408

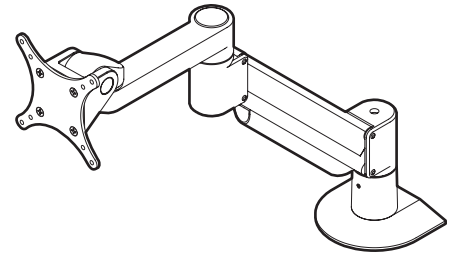
Parts List

ITEM	DESCRIPTION / PART NO.	QUANTITY
A 	3/8-16 Nylon Stop Nut 701418	1
B 	3/8-16 x 1-1/4" Flat Socket Cap Screw 1 701855	
C 	Foam Pad 1 701565 <i>Included with Models 8408 & 8408-thru only</i>	
D 	3/8-16 x 7/8" Flat Socket Cap Screw 1 701799	
E 	Rectangular Spacer 1 701544	
F 	1/2-13 x 3" Socket Set Screw 1 701126	

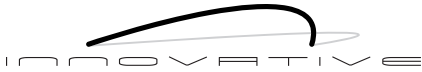
ITEM	DESCRIPTION / PART NO.	QUANTITY
G 	3/8-16 x 2-1/2" Hex Head Bolt 1 700268 <i>Included with Models 8408-thru & 8408-cup only</i>	
H 	Foam Pad 1 701120 <i>Included with Model 8408-cup only</i>	
I 	End Cap Dog Washer 2 104989	
J 	M6-1 x 18mm Phillips Pan Head Screw 2 105304	
K 	7/32" Allen Wrench 1 701127	

MODEL 7000

Installation Instructions

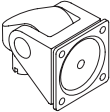

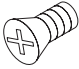
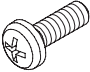
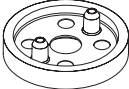



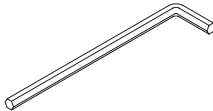

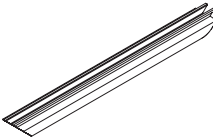
<p>1</p>	<p>2</p>	<p>3</p> <p><small>* Some monitors may require a spacer hardware kit. See page 2 for details.</small></p>
<p>4</p>	<p>5</p>	<p>6</p>
<p>7</p>	<p>8</p>	<p>?</p> <p>800.524.2744 www.LCDarms.com</p>



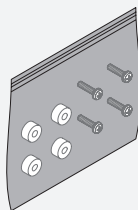
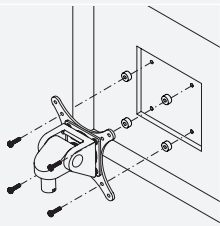
MODEL 7000

Parts List

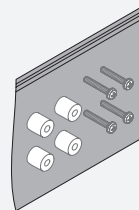
ITEM	DESCRIPTION / PART NO.	QUANTITY
A	 Monitor Tilter 405397	1
B	 75/100mm VESA® Adapter Plate 1 105587	1
C	 10-32 x 3/8" Phillips Pan Head Screw 1 702281 (4-pack)	1
D	 M4 x 12mm Phillips Pan Head Screw 1 702096 (4-pack)	1
E	 Dog Washer 105189	1

ITEM	DESCRIPTION / PART NO.	QUANTITY
F	 10-32 x 3/8" FPhMS w/Lock Patch 1 705198	1
G	 7/32" Allen Wrench 701127	1
H	 3/32" Allen Wrench 700146	1
I	 Cable Cap 102043-9.5	1

OPTIONAL SPACER KITS In some cases, the mounting surface on your monitor may be recessed further than permitted by VESA® standards. As a result, a spacer kit may be required.



.25" Spacer Hardware Kit
 (4) .25" Spacers
 (4) M4 x 18mm Phillips Pan Head Screws
 Order # P404923-B



.5" Spacer Hardware Kit
 (4) .5" Spacers
 (4) M4 x 25mm Phillips Pan Head Screws
 Order # P404923-C

How do I counterbalance my arm?

1

7/32" Allen Wrench

IMPORTANT!

- Monitor must be on arm
- Arm must be in mount

Press the arm down to approximately parallel with the desk prior to turning the strength adjustment screw.

If the arm **drifts upward**, turn the adjustment screw clockwise.

If the arm **drifts downward**, turn the adjustment screw counter-clockwise.

Depending on the weight of your monitor, **you may have to make 15-20 turns.**

2

3/32" Allen Wrench

In some instances, further counterbalance adjustments are needed to allow the arm's instant height adjustment function to work properly.

If your arm is not staying in position after performing step 1, follow these steps:

With arm in raised position, tighten set screw **(A)**.

With arm in horizontal position, tighten set screw **(B)**.

Do not over tighten screws.