

# ergotron<sup>®</sup>

*moving you forward*

## **Mosaic<sup>™</sup> Medical Cart**

- **Standardize with confidence:** Consolidate healthcare operations with a single, standardized platform that customizes and adapts to meet the evolving needs of any hospital application.
- **Easy to maintain:** Designed with high-quality materials to withstand demanding healthcare environments and modularity that enables quick serviceability.
- **Caregiver satisfaction:** Enable caregivers to provide better patient care with a cart that prioritizes ergonomic comfort, ease of use, and customization to any workflow.
- **Improved asset utilization:** RhythmConnect<sup>™</sup> software delivers lower cost of ownership through tracking, managing, configuring, and remotely controlling assets at both an individual and fleet level, ensuring they are used optimally and reducing downtime.



## EMPOWER CARE, SIMPLIFY MANAGEMENT



More than a mobile workstation, Mosaic is a customizable platform designed to help healthcare professionals thrive and deliver exceptional care. Its flexible design meets the ergonomic needs of caregivers, enhancing comfort and safety for greater efficiency and job satisfaction. Mosaic also empowers IT teams with a tech-forward approach that simplifies workstation management and adapts to evolving healthcare needs. By unifying and supporting every team, Mosaic streamlines workflows and enables professionals to focus on what matters most—improving patient care.

## BENEFITS COMPARISON

### Benefits for IT

- **Future-Ready:** Prepared for continuous improvement, the platform is built and designed to evolve by accommodating upgrades and innovations, allowing for redeployment of assets and cutting down on unnecessary replacement costs.
- **Fleet Management:** RhythmConnect FleetControl software revolutionizes cart management with remote diagnostics, real-time fleet monitoring, predictive maintenance, and actionable asset insights. A secure BLE Mesh network ensures seamless connectivity, while the open API integrates easily with existing platforms like ITSM.
- **Serviceability:** Simplify maintenance with a single inventory of replacement parts, modular components, and remote troubleshooting via WiFi or Bluetooth®, ensuring fast and efficient repairs and reducing downtime.
- **Quality:** Ergotron's industry-leading quality is evident in its ISO 9001 certification, with lift engines built to last through 100,000 cycles and a 5-year warranty that lowers the total cost of ownership.

### Benefits for Caregivers

- **Effortless Maneuverability:** Larger casters, handles or grip points on all sides and a compact footprint enable caregivers to easily maneuver the cart through any environment, ensuring smooth mobility in any space.
- **Ergonomic Excellence:** With 40 years of ergonomic expertise and Constant Force Technology, caregivers can effortlessly adjust the cart's height as well as fine-tune the monitor and keyboard position for optimal comfort during long shifts.
- **Customizable Workflow:** Tailor the cart to fit any workflow with modular configurations, including multiple drawer tiers, accessory zones and a wide selection of add-ons, promoting a more organized and efficient workspace.
- **Time-Saving Technology:** The range of powered carts are packed with technology from external PC restart to RFID badge scan, USB fast-charge and on-board training videos to save caregivers' time. Upgrade to RhythmConnect and include one-touch ticketing.

#### Non-Powered



Mosaic Laptop Cart

#### Integrated Power



Mosaic Laptop Cart, AC or DC

#### Portable Power

Coming soon



Mosaic Laptop Cart with  
Ergotron Mobile Power



Mosaic LCD Cart



Mosaic LCD Cart, AC or DC



Mosaic LCD Cart with  
Ergotron Mobile Power

## INTEGRATED POWER LCD CART

Highly customizable • Technology driven • Ergonomic comfort

### Industry leading technology

- 1 7" LCD touchscreen display with power usage indicator, drawer lock/unlock per row, PC restart, One-Touch Ticketing with RhythmConnect™ upgrade
- 2 Worksurface light and fast-charge USB port for mobile devices
- 3 RFID badge reader, 45mAh battery offering AC or DC output (lasts up to 12 hours)

Bluetooth® 5.2 embedded

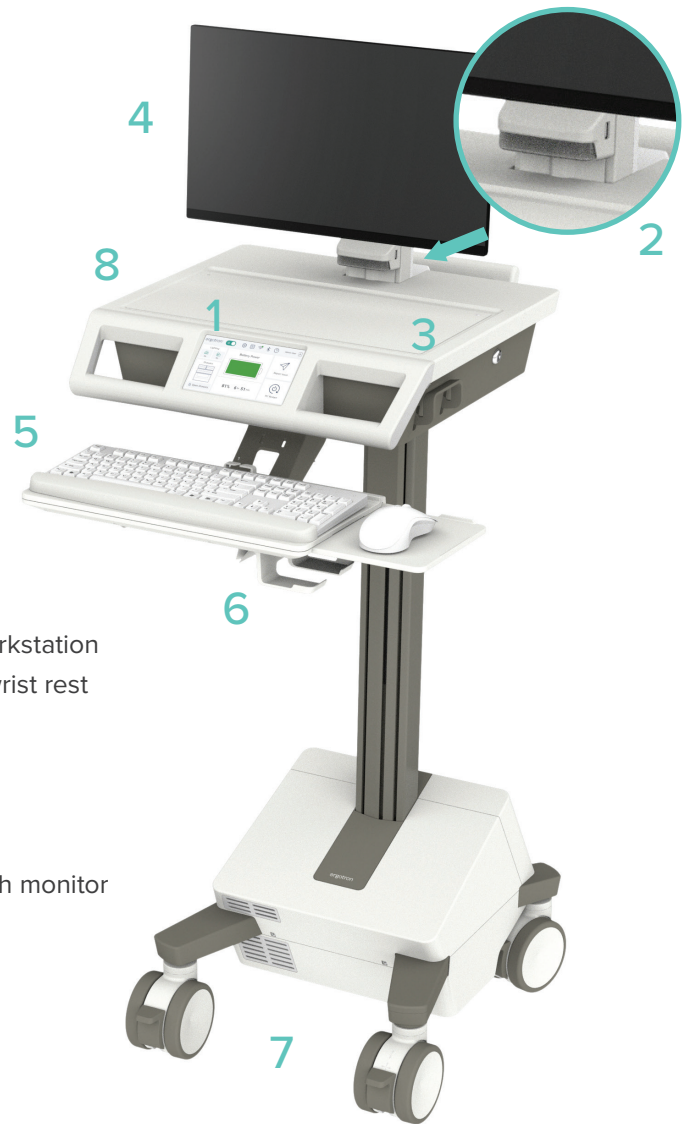
Spacious tech compartment with convenient charging for technology peripherals (up to 3 DC, 4 AC)

### Ergonomic comfort and maneuverability

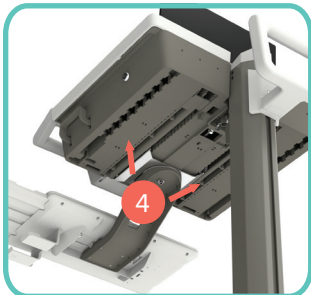
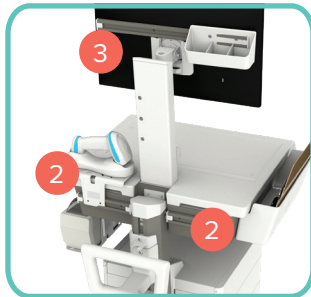
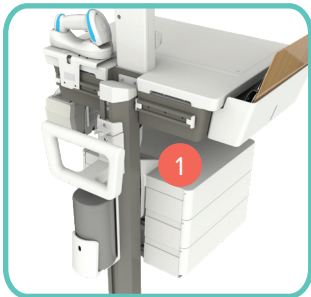
- 4 Monitor pans 180° for easy visibility at bedside and transporting workstation
- 5 Keyboard tray features negative tilt, 180° pan, keyboard light, and wrist rest
- 6 Cubby secures mouse on the move
- 7 Easy to maneuver, 5" (12.7 cm) lockable casters
- 8 Recessed worksurface prevents items from falling

Multiple handles and grip points for improved maneuverability

Constant Force™ Technology offers effortless height adjustment for both monitor and worksurface



## LCD Accessory Mounting Zones





## NON-POWERED LAPTOP CART

Highly customizable • Ergonomic comfort • Ergotron Mobile Power compatible

### Ergonomic comfort

- 1 Keyboard tray features negative tilt, 180° pan and wrist rest
- 2 Cubby secures mouse on the move
- 3 Easy to maneuver, 5" (12.7 cm) lockable casters

Multiple handles and grip points for improved maneuverability

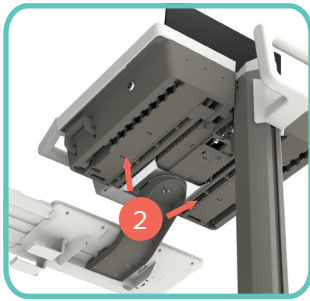
Constant Force™ Technology offers effortless height adjustment for both monitor and worksurface

### Enhanced user convenience

- 4 Recessed worksurface prevents items from falling
- 5 Storage cubby and mobile device tray



## Laptop Accessory Mounting Zones



Order Guide

STEP 1: CHOOSE BASE MODEL

Integrated Power

Non-Powered



Mosaic Laptop Cart, AC or DC



Mosaic LCD Cart, AC or DC



Mosaic Laptop Cart



Mosaic LCD Cart

OPTIONAL STEP 2: CHOOSE DRAWER CONFIGURATION AND ROWS

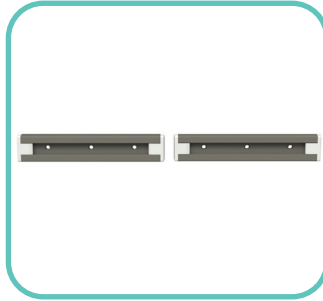


\*additional configurations available

STEP 3: CHOOSE ACCESSORIES

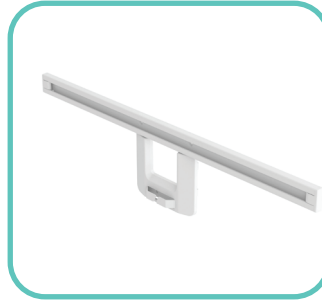
## ACCESSORY PORTFOLIO TAILORED TO YOUR NEEDS

See website for additional accessories



**Horizontal T-Slot Set,  
Rear Mount  
98-676-289**

Mounts behind the worksurface and accommodates accessories



**Horizontal T-Slot,  
VESA Mount  
98-678-629**

Mounts behind a monitor and accommodates accessories  
\*Compatible with LCD Carts only



**Slotted Shelf,  
Horizontal T-Slot Mount  
98-669-290**

Adds a scanner or printer to a mobile workstation



**Slotted Shelf,  
Side Mount  
98-668-290**

Adds a scanner or printer to a mobile workstation



**Extendable Slotted Shelf,  
Horizontal T-Slot Mount  
98-674-290**

Holds a wireless barcode scanner, printer or camera



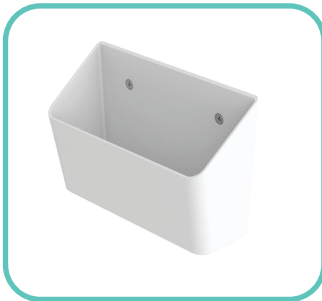
**Bin with Dividers,  
Horizontal T-Slot Mount  
98-673-629**

Adjustable dividers create one, two or three compartments



**Document Bin,  
Side Mount  
98-683-629**

Allows easy access to frequently used documents



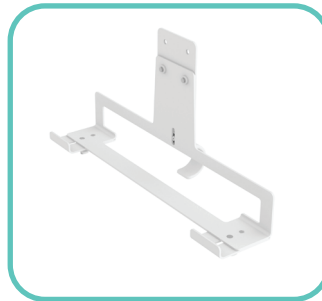
**Signature Pad Holder,  
Horizontal T-Slot Mount  
98-663-629**

Conveniently position a signature pad or other device on a workstation



**Corded Scanner Holder,  
Horizontal T-Slot Mount  
98-670-629**

Positions a corded handheld scanner to the left or right of a workstation



**Document Scanner Holder  
98-685-629**

Positions a document scanner below the monitor for convenient scanning  
\*Compatible with LCD Carts only



**Adjustable Wipes Holder,  
Side Mount  
98-682-629**

Conveniently store and access cleaning wipes



**Portable Power  
Coming Soon**



	Mosaic Laptop Cart	Mosaic LCD Cart	Mosaic Laptop Cart, AC/DC	Mosaic LCD Cart, AC/DC
Part Number	M021-0101-100000-1-0	M011-0101-100000-1-0	M121-1101-100000-1-1 (AC)	M111-1101-100000-1-1 (AC)
			M221-1101-100000-1-1 (DC)	M211-1101-100000-1-1 (DC)
Typical LCD Size	N/A	24"	N/A	24"
Weight Capacity	up to 31 lbs (14 kg)	up to 31 lbs (14 kg)	up to 31 lbs (14 kg)	up to 31 lbs (14 kg)
Lift	20" (51 cm)	25" (63.5 cm)	20" (51 cm)	25" (63.5 cm)
Tilt	N/A	35°	N/A	35°
Pan	N/A	180°	N/A	180°
VESA	N/A	MIS-D 100X100 and 75x75	N/A	MIS-D 100X100 and 75x75
Cart Weight	70 lbs (31 kg)	75 lbs (34 kg)	87.5 lbs (40 kg)	92.5 lbs (42 kg)
Warranty	5 year warranty on mechanical and electrical parts		5 year warranty on mechanical and electrical parts 3 year capacity warranty on factory installed LiFe batteries, 5 year warranty on manufacturer defect	

