



OM Seating

ESD | ElectroStatic Discharge



SMART SEATING

April 1, 2017

# Selective Overview (om ESD seating)

om | smart seating



Small / Petite  
Build

Average /  
Medium Build

Large

stools



ESD12

ESD44EZ

ESD74

ESD78

ESD45EZ

ESDLS78

\*SHOWN WITH OPTIONAL ER-75PU ARMS & SCBLK UPHOLSTERY

\*SHOWN WITH OPTIONAL ER-75PU ARMS & SCBLK UPHOLSTERY

\*SHOWN WITH OPTIONAL ER-75PU ARMS & SCBLK UPHOLSTERY

\*SHOWN WITH OPTIONAL ER-75PU ARMS & SCBLK UPHOLSTERY

\*SHOWN WITH OPTIONAL ER-75PU ARMS & SCBLK UPHOLSTERY

Description (based on CL12)	<ul style="list-style-type: none"> <li>Pneumatic lift</li> <li>Polished aluminum base</li> <li>ESD carpet casters</li> <li>Circle ring height adjuster</li> <li>Conductive drag chain</li> </ul>
-----------------------------	--

Description (based on CL44EZ)	<ul style="list-style-type: none"> <li>Pneumatic lift</li> <li>Polished aluminum base</li> <li>ESD carpet casters</li> <li>EZ Back height adjustment</li> <li>Independent seat and back angle adjustment</li> <li>Conductive drag chain</li> </ul>
-------------------------------	--

Description (based on PT74)	<ul style="list-style-type: none"> <li>Pneumatic lift</li> <li>Polished aluminum base</li> <li>ESD carpet casters</li> <li>EZ Back height adjustment</li> <li>Rocking tilt</li> <li>Seat tilting/Forward tilting</li> <li>Seat depth adjustment</li> <li>Tension knob</li> <li>Adjustable lumbar</li> <li>Conductive drag chain</li> </ul>
-----------------------------	--

Description (based on PT78)	<ul style="list-style-type: none"> <li>Pneumatic lift</li> <li>Polished aluminum base</li> <li>ESD carpet casters</li> <li>EZ Back height adjustment</li> <li>Rocking tilt</li> <li>Seat tilting/Forward tilting</li> <li>Seat depth adjustment</li> <li>Tension knob</li> <li>Adjustable lumbar</li> <li>Conductive drag chain</li> </ul>
-----------------------------	--

Description (based on CL45EZ)	<ul style="list-style-type: none"> <li>Pneumatic lift</li> <li>Polished aluminum base</li> <li>ESD carpet casters</li> <li>EZ Back height adjustment</li> <li>Independent seat and back angle adjustment</li> <li>Chrome footring with ESD bushing</li> <li>Conductive drag chain</li> </ul>
-------------------------------	--

Description (based on IL77HD)	<ul style="list-style-type: none"> <li>Pneumatic lift</li> <li>Polished aluminum base</li> <li>ESD carpet casters</li> <li>EZ Back height adjustment</li> <li>Infinitely locking back tilt</li> <li>Seat depth adjustment</li> <li>Adjustable lumbar</li> <li>Conductive drag chain</li> </ul>
-------------------------------	--

OVERALL DIMENSIONS (APPROX.)	
Overall Height	16" - 20.5"
Overall Width	22"
Seat Height	15.5" - 20"
Seat	16" diameter

OVERALL DIMENSIONS (APPROX.)	
Overall Height	32" - 41"
Overall Width	25"
Seat Height	16" - 21"
Seat Width	18"
Seat Depth	17"
Back Width	16"
Back Height	13"
Back Height adj.	4"

OVERALL DIMENSIONS (APPROX.)	
Overall Height	35" - 44"
Overall Width	27"
Seat Height	17" - 22"
Seat Width	20"
Seat Depth	17 - 20.1"
Back Width	17"
Back Height	18"
Back Height adj.	4"

OVERALL DIMENSIONS (APPROX.)	
Overall Height	40" - 48"
Overall Width	27"
Seat Height	17" - 22"
Seat Width	21"
Seat Depth	18 - 21.1"
Back Width	19.5"
Back Height	22"
Back Height adj.	4"

OVERALL DIMENSIONS (APPROX.)	
Overall Height	41" - 55"
Overall Width	27"
Seat Height	24" - 34"
Seat Width	18"
Seat Depth	17"
Back Width	16"
Back Height	13"
Back Height adj.	4"

OVERALL DIMENSIONS (APPROX.)	
Overall Height	49" - 57"
Overall Width	27"
Seat Height	24" - 34"
Seat Width	21"
Seat Depth	18 - 21.1"
Back Width	19.5"
Back Height	22"
Back Height adj.	4"



## Fabrics

### ESD Fabric:



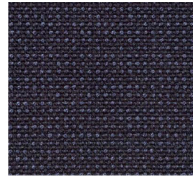
XS901 Anthracite



XS805 Graphite



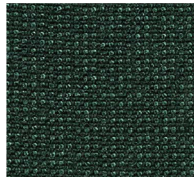
XS806 Ash



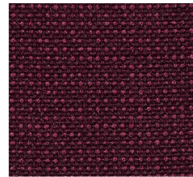
SX408 Ink



XS407 Cobalt

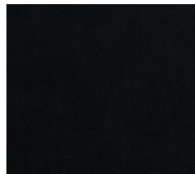


XS502 Forest

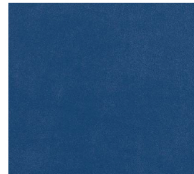


XS303 Tinto

### ESD Vinyl:



SCBLK SC-BK



SCBLU SC-Blue

## ESD Arm

### ER-75PU



- Height adjustable T-arms with molded ESD arm pads
- Adjustable height range of 2.75"



### ESD Model Information

OM ESD chairs are constructed from our most popular models to meet special ESD seating requirements. Fabrics are made of 99% nylon and 1% carbon fiber. We also stock 7 ESD fabric colors and 2 ESD vinyls.

Model	Fab. Grade	List - May2022	Basis	Description
EF12	ESD fabric	430	CL12	Seat: 16" diameter low stool with circle ring for height adjustment
EV12	ESD vinyl	455	Low Stool	Back: None seat ht. 15.5-20.5
EF13	ESD fabric	541	CL13	Seat: 16" diameter high stool with circle ring for height adjustment
EV13	ESD vinyl	566	High Stool	High stool version of EF12/ EV12 (w/ footring) seat ht. 22-32
EF14	ESD fabric	695	CL14	Seat: 16" diameter low stool with foot activated height adjustment
EV14	ESD vinyl	720	Low Stool	Back: None seat ht. 16-21
EF15	ESD fabric	813	CL15	Seat: 16" diameter low stool with foot activated height adjustment
EV15	ESD vinyl	838	Exam Stool	Back: 13"w x 9"h, unique curvature & back size seat ht. 16-21
EF44	ESD fabric	632	CL44EZ	Simple-functioned mid back task chair
EV44	ESD vinyl	672	Task Chair	seat ht. 16-21
EF45	ESD fabric	742	CL45EZ	Lab Stool version of EF44 or EV44
EV45	ESD vinyl	782	Lab Stool	seat ht. : std. 24-34, optional 20-28
EFCLS57D	ESD fabric	771	CLS57D	Lab Stool version of PA57D with fixed height footring
EVCLS57D	ESD vinyl	811	Lab Stool	seat ht. 25-33
EFDB56	ESD fabric	1021	DB56	Lab Stool version of DB57 with adjustable height footring
EVDB56	ESD vinyl	1061	Lab Stool	seat ht. 23-33
EFDB74	ESD fabric	1043	DB74	Multi-functioned cross performance specialized back design
EVDB74	ESD vinyl	1083	X-Perform	seat ht. 18-23
EFIU73	ESD fabric	1025	IU73	Multi-functioned cross performance stool chair
EVIU73	ESD vinyl	1065	Lab Stool	300 lbs. Weight capacity seat ht. 24-34
EF62	ESD fabric	880	PT62	Multi-functioned cross performance petite back sized chair
EV62	ESD vinyl	920	Task Chair	300 lbs. Weight capacity seat ht. 17-22
EF62	ESD fabric	990	EF62	Lab Stool version of EF62 or EV62 with CLS mechanism
EV62	ESD vinyl	1030	Lab Stool	seat ht. : std. 23-33, optional 21-28
EF74	ESD fabric	980	PT74	Multi-functioned cross performance mid back sized chair
EV74	ESD vinyl	1020	Task Chair	300 lbs. Weight capacity seat ht. 17-22
EF74	ESD fabric	1090	EF74	Lab Stool version of EF74 or EV74 with CLS mechanism
EV74	ESD vinyl	1130	Lab Stool	seat ht. : std. 23-33, optional 21-28
EF77	ESD fabric	952	7770	Multi-functioned cross performance high back sized chair
EV77	ESD vinyl	992	Task Chair	seat ht. 17-22
EF78	ESD fabric	1053	PT78	Multi-functioned cross performance high back sized chair
EV78	ESD vinyl	1093	Task Chair	300 lbs. Weight capacity seat ht. 17-22
EF78	ESD fabric	1163	EF78	Lab stool version of EF78 or EV78 with CLS mechanism
EV78	ESD vinyl	1203	Lab Stool	seat ht. 21-31
ESD Options		List - May2022	Basis	Description
ER-75PU	ESD Arms	119	KR25-LOW	ESD Arm with Special ESD PU Arm Pad
CAS-ESD-C	ESD Carpet Casters	-	-	Included in all prices shown above
CAS-ESD-S	ESD Soft Casters	45	-	\$90 (separate purchase price); \$45 upcharge when used as substitute
CAS0050C-ESD-BKG-C	ESD Braking Soft Casters	55	-	ESD Braking SOFT Casters with Stainless Steel Hood/Cover
GLIDES	ESD Glides	-	-	\$45 (separate purchase price); no upcharge when used as substitute

**\* Note (ESD Stools):**

ESD stools are equipped with special components such as an ESD footring, 10" chrome cylinder, and a 27" polished aluminum base with ESD carpet casters attached.

**\*\* All prices subject to change without notice. \*\***

Check with OM Seating for latest pricing and information on our ESD chairs.  
[www.omseating.com](http://www.omseating.com)

rev: May 2022