

HOW TO CHOOSE YOUR DESK ATTACHMENT

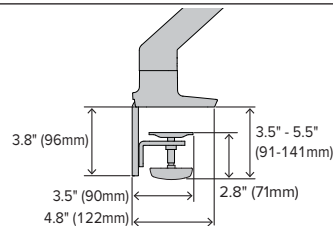
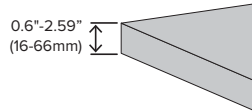
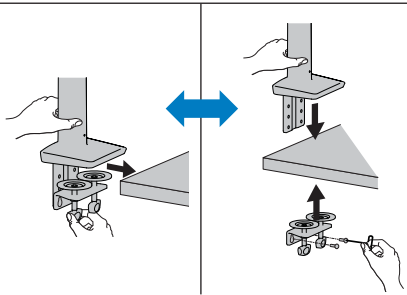
HX Desk Monitor Arm

Standard 2-Piece Desk Clamp

This is the most common option

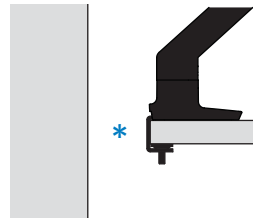


- This is the most common option.
- It can slide on from back or side of desk.
- It can also disassemble to attach when no space behind desk is available.
- Requires space under desk.
- Works with wide variety of desk sizes and shapes.
- Also available as accessory.

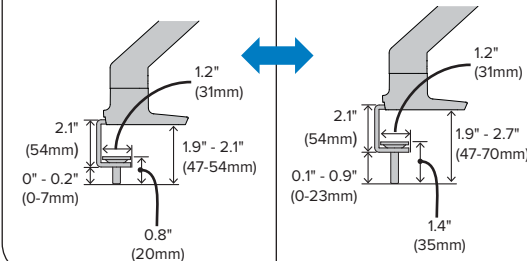
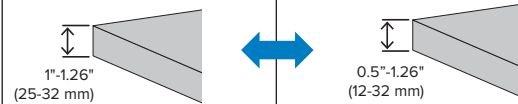
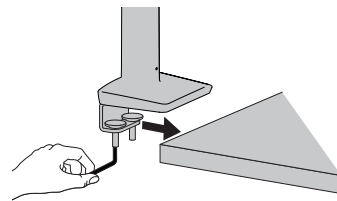


C-Clamp (under mount)

Less common option

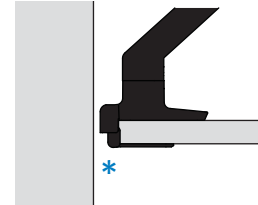


- Used in Pro-office furniture systems.
- Use when the space for clamp under desk is very limited.
- * Requires 1.2" (31 mm) from edge of desk to slide on from the back or can slide on from the side if possible.
- Also available as accessory.
- Has 0.8" (2cm) setback from edge of desk to allow room for divider panels.

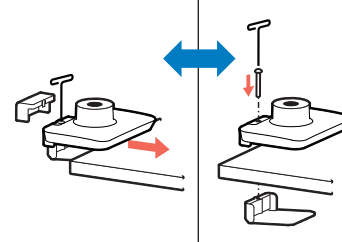


Low Profile Clamp (top mount)

Less common option

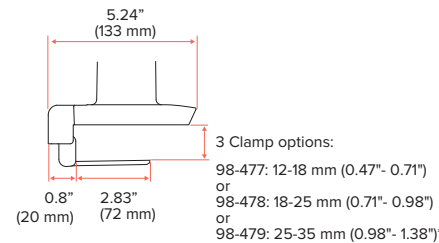


- Recommended for height adjustable desks.
- Use when there is a need to attach clamp from above the desk.
- Use when the space for clamp under desk is very limited.
- It can slide on from back or side of desk.
- It can also disassemble to attach when no space behind desk is available.
- * Requires 0.8" (2cm) open space from edge of desk.
- Also available as accessory.



3 Clamp options:

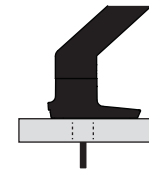
- 98-477: 12-18 mm (0.47" - 0.71")
- or
- 98-478: 18-25 mm (0.71" - 0.98")
- or
- 98-479: 25-35 mm (0.98" - 1.38")*



*Clamp included for North American purchases.

Grommet Mount

Included in some products



- Use when mounting to edge of desk is not available or not preferred.
- Use when base does not reach edge of desk when monitors are in desired location.
- Also available as accessory.

